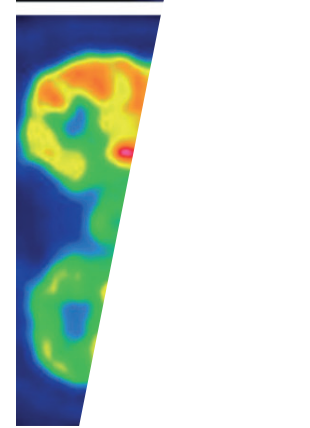
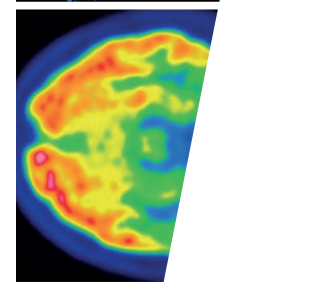
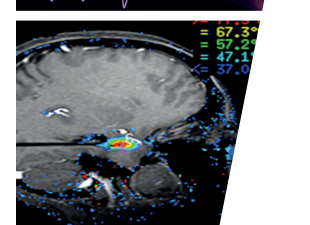
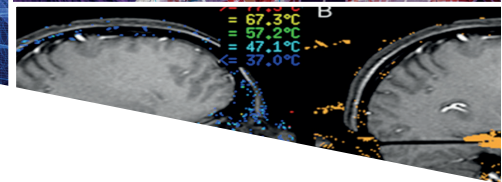


HÔPITAL UNIVERSITAIRE DE BRUXELLES
ACADEMISCH ZIEKENHUIS BRUSSEL



Pediatric Epilepsy Surgery Symposium

Brussels 8th November 2024

MORNING SESSION			
8:30	Introduction - Burden of Epilepsy	Sophie Schuind	ULB Brussels
8:45	Non surgical treatment / Precision medicine in epilepsy	Alec Aeby	ULB Brussels
9:00	Which patients are eligible for epilepsy surgery?	Tom Balfroid	ULB Brussels
9:15	Presurgical evaluation <ul style="list-style-type: none"> MRI PET Neuropsychological assessment Magnetoencephalography SEEG 	Valentina Lolli Gil Leurquin Simon Baijot/Hichem Slama Xavier de Tiege/Odile Feys Claudine Sculier	ULB Brussels
10:40-11:10 Pause			
11:10	Innovation <ul style="list-style-type: none"> Virtual brain models Epilepsy surgery without seizures? Discussion 	Fabrice Bartolomei Mathilde Chipaux	AMU Marseille Fondation Rothschild Paris
12:30-13:30 Pause			
AFTERNOON SESSION			
13:30	Introduction - Surgical treatment overview	Sophie Schuind	ULB Brussels
13:40	Resective surgery <ul style="list-style-type: none"> Beyond MR-negative cases: automated detection algorithms Lesionectomies - advances in resective surgery FCD - LEAT anatomopathology 	Sophie Adler	UCL London
		Thomas Blauwblomme	Hôpital Necker Paris
		Laetitia Lebrun	ULB Brussels
14:40	Non resective surgery <ul style="list-style-type: none"> Neuro-stimulation: present and future Hemispherotomy/callosotomy 	Kristl Vonck Sarah Ferrand Sorbets	UZ Ghent Fondation Rothschild Paris
15:40-16:10 Pause			
16:10	Mini-invasive Surgery <ul style="list-style-type: none"> SEEG-guided RF thermocoagulations Laser Interstitial Thermal Therapy 	Olaf Schijns Thomas Blauwblomme	UMC Maastricht Hôpital Necker Paris
17:00	Cognitive outcome	Claudine Sculier	ULB Brussels
17:20	Conclusion - future perspectives in epilepsy surgery	Claudine Sculier/ Sophie Schuind	ULB Brussels
17:40	Drink		

For Wi-Fi access, please connect to 'Museemed Guests' using the code 'visiteur'