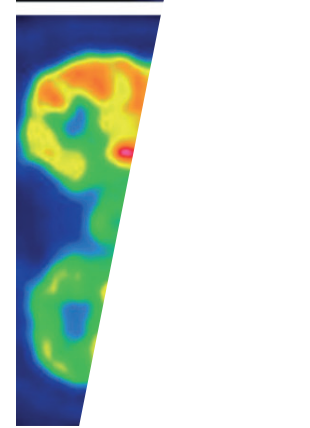
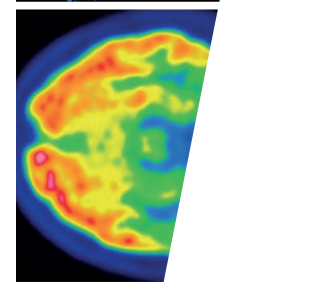
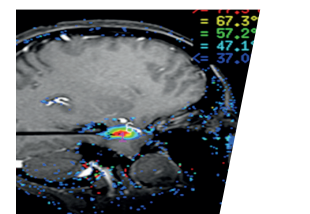
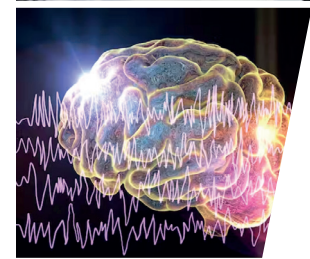
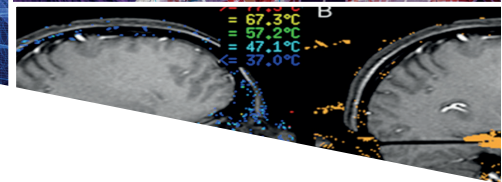


HÔPITAL UNIVERSITAIRE DE BRUXELLES  
ACADEMISCH ZIEKENHUIS BRUSSEL



# Pediatric Epilepsy Surgery Symposium

Brussels 8<sup>th</sup> November 2024

## PRELIMINARY PROGRAM

MORNING SESSION			
8:30	<b>Introduction - Burden of Epilepsy</b>	Sophie Schuind	ULB Brussels
8:45	<b>Non surgical treatment / Precision medicine in epilepsy</b>	Alec Aeby	ULB Brussels
9:00	<b>Which patients are eligible for epilepsy surgery?</b>	Tom Balfroid	ULB Brussels
9:15	<b>Presurgical evaluation</b> <ul style="list-style-type: none"> <li>MRI</li> <li>PET</li> <li>Neuropsychological assessment</li> <li>Magnetoencephalography</li> <li>SEEG</li> </ul>	Valentina Lolli Gil Leurquin Simon Bajiot/Hichem Slama Xavier de Tiege/Odile Feys Claudine Sculier	ULB Brussels
10:40-11:10 <b>Pause</b>			
11:10	<b>Innovation</b> <ul style="list-style-type: none"> <li>Virtual brain models</li> <li>Epilepsy surgery without seizures?</li> <li>Discussion</li> </ul>	Fabrice Bartolomei Mathilde Chipaux	AMU Marseille Fondation Rothschild Paris
12:30-13:30 <b>Pause</b>			
AFTERNOON SESSION			
13:30	<b>Introduction - Surgical treatment overview</b>	Sophie Schuind	ULB Brussels
13:40	<b>Resective surgery</b> <ul style="list-style-type: none"> <li>Beyond MR-negative cases: automated detection algorithms</li> <li>Improving resective surgery - advances in intraoperative stim and monitoring</li> <li>FCD - LEAT anatomopathology</li> </ul>	Sophie Adler Tom Theys Laetitia Lebrun	UCL London KUL Leuven ULB Brussels
14:40	<b>Non resective surgery</b> <ul style="list-style-type: none"> <li>Hemispherotomy/callosotomy</li> <li>Neuro-stimulation: present and future</li> </ul>	Sarah Ferrand Sorbets Kristl Vonck	Fondation Rothschild Paris UZ Ghent
15:40-16:10 <b>Pause</b>			
16:10	<b>Mini-invasive Surgery</b> <ul style="list-style-type: none"> <li>SEEG-guided RF thermocoagulations</li> <li>Laser Interstitial Thermal Therapy</li> </ul>	Olaf Schijns Thomas Blauwblomme	UMC Maastricht Hôpital Necker Paris
17:00	<b>Cognitive outcome</b>	Claudine Sculier	ULB Brussels
17:20	<b>Conclusion - futur perspectives in epilepsy surgery</b>	Claudine Sculier/ Sophie Schuind	ULB Brussels
17:40	<b>Drink</b>		